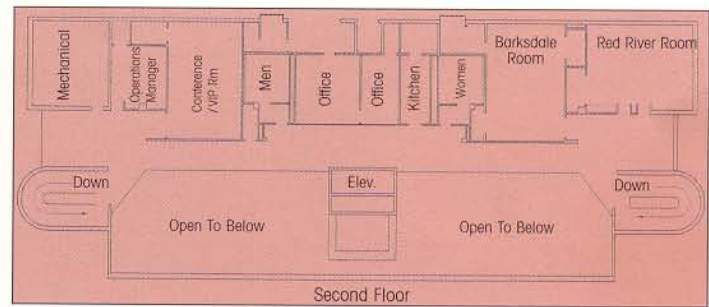


CIVIC CENTER COMPLEX: An expansion completed in 1998 brought the total size of the complex to approximately 50,000 square feet and added three additional break-out rooms for conventions and trade shows. The ground floor of the complex can be divided into many different configurations and will house a total of (130) 10'x10' exhibition booths. Banquet style seating in the main hall can accommodate 2,500; theater style 3,000. The new Banquet Room will accommodate an additional (39) 10'x10' exhibition booths; theater style 936; banquet style 720 or 456 classroom style.



SECOND FLOOR MEETING ROOMS

APPROXIMATE SEATING CAPACITY

Room	Dimensions	Ceiling Ht.	Theater	Classroom	Banquet
Red River	17' x 23'	10'	70	40	50
Barksdale	22' x 33'	10'	90	44	60
Bodcau	45' x 56'	14'	300	140	184
Cypress	45' x 56'	14'	300	140	184
Bistineau	45' x 56'	14'	300	140	184

FEATURES: Catering Kitchen • Concession Area • Two Garment Check Rooms • Registration & Ticket Booth • Two Performer's Dressing Rooms • Conference & VIP Lounge • Loading docks 42" high • Portable Stage • Portable Dance Floor • 16' x 14' Service Door • 400 p.s.f. Load Limit • 24' Clearance • Two Elevators • TVs and VCRs • Tape Reproduction • Projectors • Portable Sound and Lecterns available • Exceptional High Fidelity Sound System • Lighted Outdoor Electronic Message Center

UTILITIES: Main Hall features Plumbing Centers with water, sewer and compressed air hookups • Power and Communication Centers with 500 KVA three-phase capacities, telephone, microphone, speaker and cue communications connections • Lighting includes high-level metal halide sources (80' candles) or optional low-level variable incandescent sources (0-20' candles) • Dimmer Board • Road Show Switch • Completely Air Conditioned.

Center